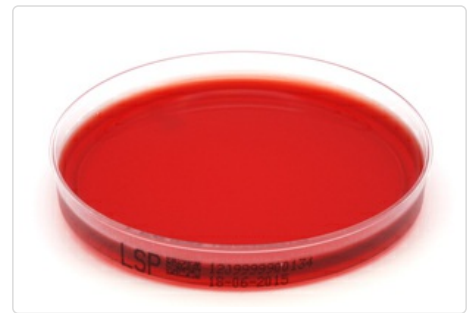


## Listerien-Selektivagar Palcam

Nach § 64 LFGB

<b>Shorthand symbol:</b>	LSP
<b>Item number:</b>	40-1209
<b>Format:</b>	Petri dish, 90mm
<b>Colour:</b>	Red, transparent
<b>Storage conditions:</b>	Dry, Closed at 4-10°C
<b>Shelf-life:</b>	2 Months
<b>pH:</b>	7.2 ± 0.2 at 25°C



### Intended use and fields of application

The Listeria Selektivagar Palcam is used for the isolation and detection of *Listeria monocytogenes* from food (§ 64 LFGB), biological sample material and heavily contaminated samples from the environment.

### Typical composition in g/l

#### in g per 1l Medium

Peptone	23
Starch	1
Sodium chloride	5
Yeast extract	3
D-Glucose	0.5
D-Mannitol	10
Esculin	0.8
Ammonium Iron(III)-citrate	0.5
Lithium chloride	15
Phenol red	0.08
Acriflavin-Hydrochloride	0.005
Agar	12

\*Adjusted as required to meet performance standards

## Microbiological quality control

The microbial performance test is carried out in conformity with the requirements of DIN EN ISO 11133.

### Productivity

Incubation conditions: 44 ± 4 hours at 37 ± 1 °C; Inoculation concentration: 80 – 120 CFU

Organism	Test strain	Specification	Colony morphology
Listeria monocytogenes 4b	ATCC 13932 / WDCM 00021	50 – 130 %	Grey green to black colony with black background

### Selectivity

Incubationsbedingungen: 44 ± 4 Stunden bei 37 ± 1 °C; Beimpfungskonzentration: 10.000 – 1.000.000 KBE

Organism	Test strain	Specification	Colony morphology
Escherichia coli	ATCC 8739 / WDCM 00012	Complete inhibition	-
Enterococcus faecalis	ATCC 19433 / WDCM 00009	Complete inhibition	-

### Specificity

Incubation conditions: 44 ± 4 hours at 37 ± 1 °C; Inoculations concentration: 1.000 – 10.000 CFU

Organism	Test strain	Specification	Colony morphology
Listeria innocua	ATCC 33090 / WDCM 00017	50 – 130 %	Grey green to black colonies with black background

### Microbial Contamination

Incubation conditions: 5 – 7 days at 20 – 25 °C and 5 – 7 at 30 – 35 °C

### Specification

Without microbial contamination