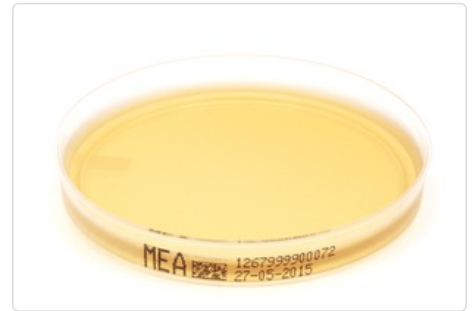


Malzextrakt-Agar

Shorthand symbol:	MEA
Item number:	40-1267
Format:	Petri dish, 90mm
Colour:	Yellow, transparent
Storage conditions:	Dry, closed at 15-22°C
Shelf-life:	3 Months
pH:	5.4 ± 0.2 at 25°C



Intended use and fields of application

Malts Atract Agar (Wort-peptone agar) is used to detect, isolate and determine the germ count of yeasts and fungi in food and other test materials.

Typical composition in g/l

in g per 1l Medium

Malt extract	30
Peptone	5
Agar	15

*Adjusted as required to meet performance standards

Microbiological quality control

The microbial performance test is carried out in conformity with the requirements of DIN EN ISO 11133.

Productivity

Incubation conditions: 46 ± 2 Stunden at 22.5 ± 2.5 °C; Inoculations concentration: 80 – 120 CFU

Organism	Test strain	Specification	Colony morphology
Candida albicans	ATCC 10231 / WDCM 00054	50 – 130 %	Medium sized, white, dry colonies
Aspergillus brasiliensis	ATCC 16404 / WDCM 00053	50 – 130 %	Dark brown and black colonies on bright large mycelium

Microbial Contamination

Incubation conditions: 5 – 7 days at 20 – 25 °C and 5 – 7 days at 30 – 35 °C

Specification

No microbial Contamination